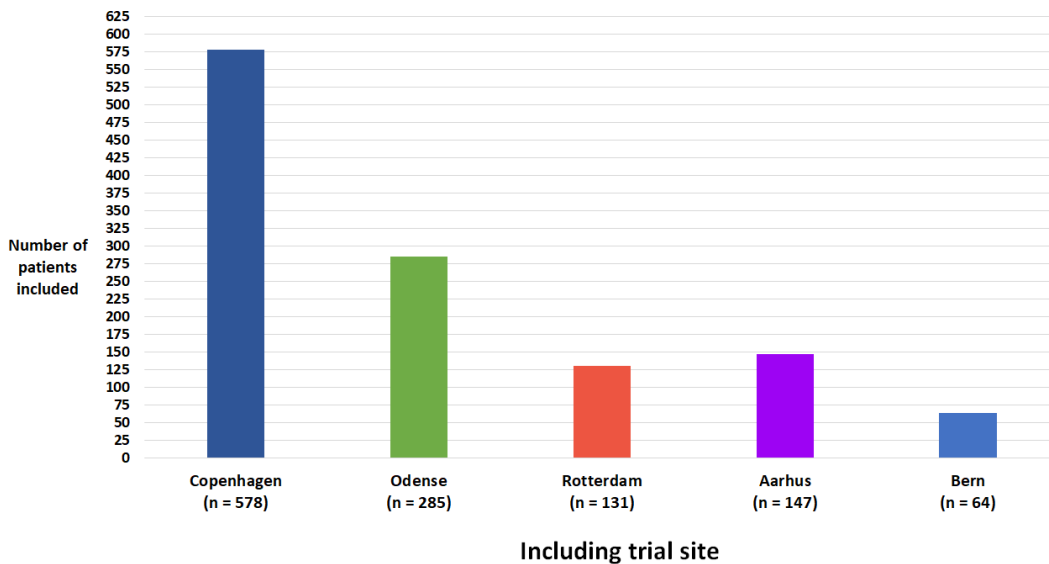
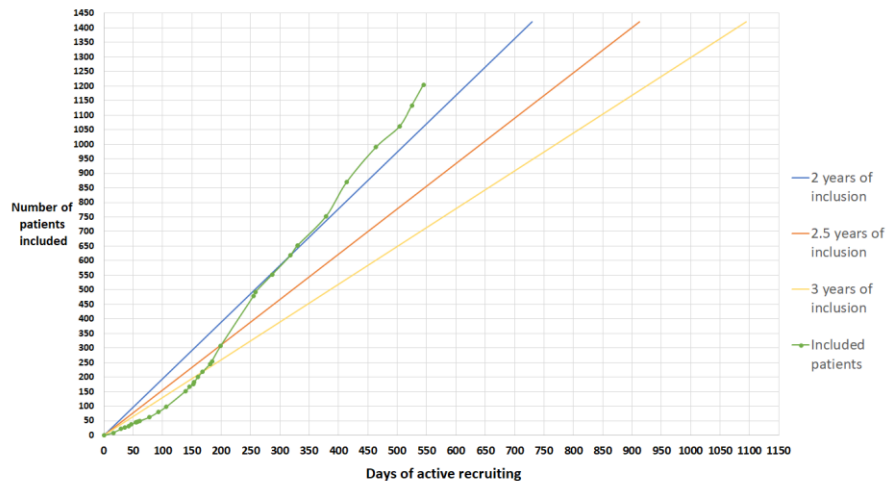
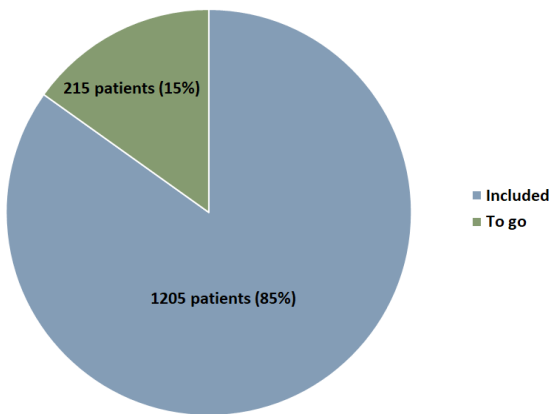




Dear all

- Recruitment rate is very impressive at the moment – a huge thanks to everyone involved. Keep it up!
- Hopefully, we will soon be able to include Groningen in The Netherlands as site.



Focus point

Much attention should be given to entering data in REDCap at each site, especially the primary and secondary outcomes. As soon after the enrolment phase is complete, we want to finalize data and start the analyses.

With best regards

Jacob Steinmetz (sponsor)

&

Tobias Arleth (c. investigator)