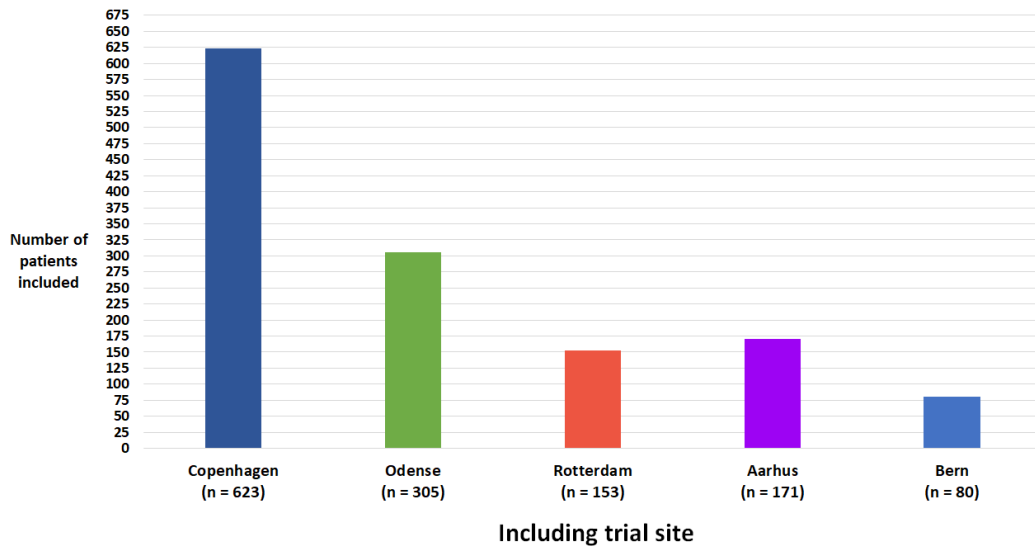
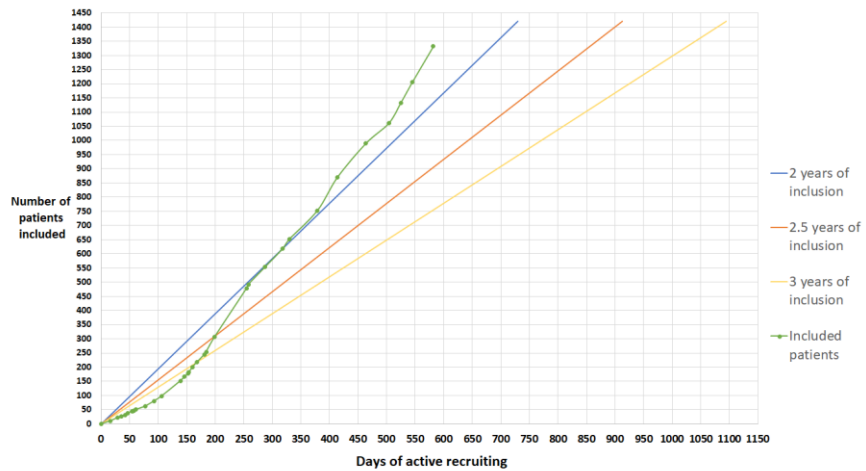
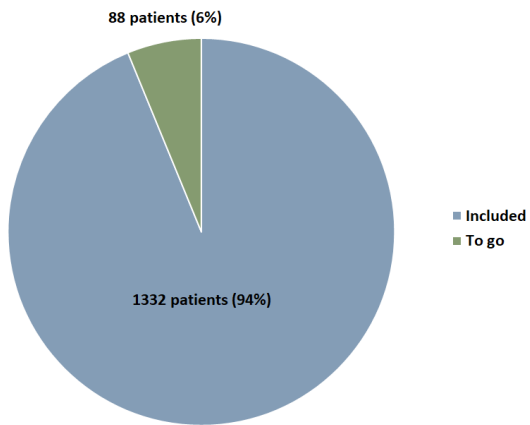




Dear all

- We have included 1332 patients, of which 106 were in June 2023. Well done!
- We continue to include for 30 days after we have enrolled the 1420 patients needed in the sample size calculation.
 → We **expect to stop the overall inclusion in September 2023** accordingly.



Focus point

All study sites **must** have focus on data entry, especially the secondary outcomes since these may be time consuming to enter. We cannot extract the data set for the statistician before the last patient at the last site has been entered. Please have this arranged at your site. Reach out to Tobias if any questions arise about data entry.

With best regards

Jacob Steinmetz (sponsor)

&

Tobias Arleth (c. investigator)